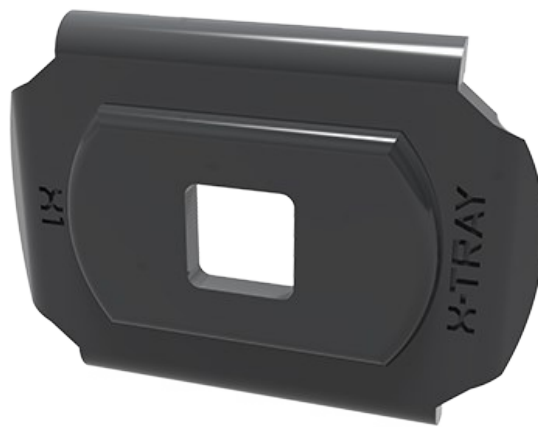




Fittings

With our flexible fittings you can shape the trays to run up and down and put junctions wherever you wish.



X5 is the strongest and most flexible joining fitting for wire trays on the market.

Models

ARTICLES / DESCRIPTION		SURFACE TREATMENT
	2701 X1 Fitting	Black Zink
	2702 X2 Fitting	Black Zink



2703
X3 Fitting

Black Zink



2704
X4 Fitting

Black Zink



2705
X5 Fitting

Black Zink



7700-111
Vertical connector

Black Zink



7700-032-2
Cantilever holder high 50x50 X-Guard

Black Zink



7700-188-2
Cantilever holder high 70x70 X-Guard

Black Zink



2711-480
X11 Pendant premium 480

Black Zink